

PowerJet

PRESSURE CLEANING SYSTEMS

More than just a name... **IT'S THE POWER YOU NEED**



**MADE IN
NORTH AMERICA**



2016 Equipment Catalog

1-877-765-9211 • sales@powerjetpressure.com • www.powerjetpressure.com



* NEW COLD WATER
FRAMES

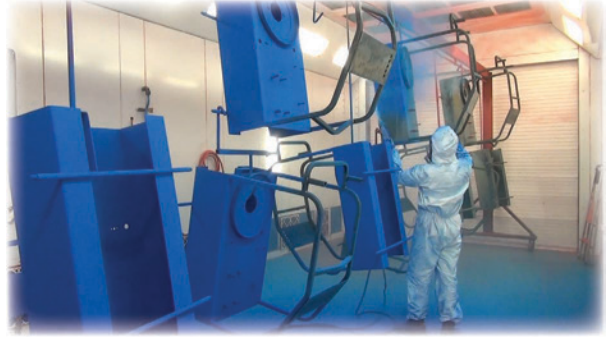
THE LARGEST MOST
COMPLETE LINE OF
SAFETY APPROVED
HIGH PRESSURE
CLEANING EQUIPMENT
IN THE WORLD



Intertek

09/16/2016

Simple in Design for Ease of Maintenance and Usability



Welcome to PowerJet. We offer one of the largest cleaning equipment lineups with over 300 models available. Our experienced distributors will offer a sincere recommendation to get you the machine that matches your specific application.

The value of our cleaning equipment begins with our knowledge of your industry. Our pressure systems are designed and engineered considering every phase of use from installation, application and ease of maintenance, resulting in reliable equipment with low cost of ownership. Our machines clean faster to reduce time and labor costs. They generate hot water or steam quick, use less chemical and have full choke fittings to deliver maximum pressure and flow to the wash gun.

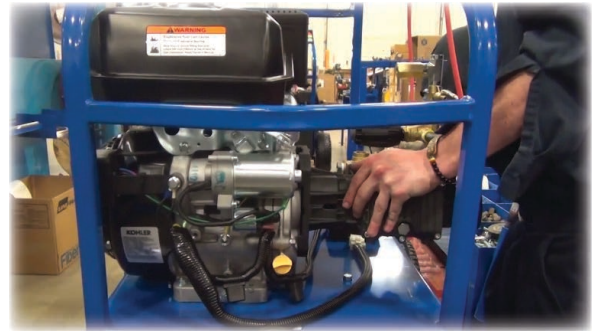
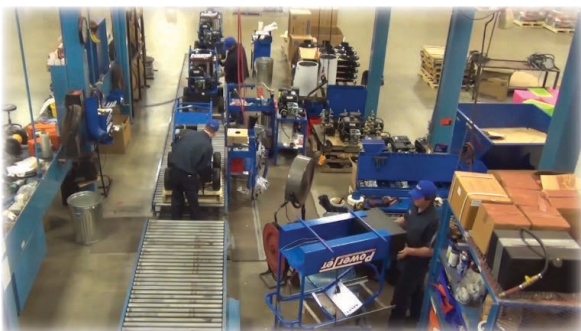
We believe in building long lasting equipment which required many late nights and early mornings to get it right. Our frames are built in our factory from heavier gauge steel, prepared in our four stage metal cleaning process and coated with 3mm of heavy powder coating; all with life time guarantee. All standard PowerJet pressure systems are safety certified to UL1776 and CSA B140.11 standards and have CSA and or ETL approval.

Our engineering and manufacturing capabilities enable our company to design one off custom systems for unlimited applications, for example conveyor wash systems, HP injection systems, cooling systems, screen washing, head bars, special instantaneous coil heaters, dry steam, water jet plastic and paper pulp cutters and pipe cleaning etc.

Thank you for considering PowerJet. Our promise to you is to deliver a system that meets or exceeds your expectations now and in the future. We look forward to doing business with you.

Yours Truly,

The Power Jet Team



• Commercial Cold Water Electric	3
• Industrial Cold Water Electric	4
• Commercial Cold Water Gas	5
• Industrial Cold Water Gasoline	6
• Industrial Cold Water Diesel	6
• Commercial Hot Water Electric - Oil Fired	7
• Industrial Hot Water Electric - Oil Fired	8
• Industrial Hot Water Electric - Natural Gas & Propane Fired	9-10
• Industrial Hot Water Fully Electrically Heated	11
• Marine & Truck Mount Systems - Hydraulic	12
• Marine & Truck Mount Systems - Electric Clutch	12
• Marine & Truck Mount Systems - Electric Motor	12
• Commercial Hot Water Gasoline - Oil Fired	13
• Commercial Hot Water Diesel - Oil Fired	13
• Portable Pickup Truck Skid	14
• Industrial Hot Water Gas - Oil Fired	15
• Industrial Hot Water Diesel - Oil Fired	16
• Modular Hot Water Heaters - Oil Fired	17
• Modular Hot Water Heaters - Natural Gas & Propane Fired	18
• Modular Hot Water Heaters - Electrically Heated	18
• Firehouse & Car Detailing System	19
• RV & Car Lot Wash Trailer	20
• In-Plant Systems	21
• Wet & Dry Steam Units	22
• Trailer Packages	23
• Coin Operated Car Wash	24
• Van or Truck Mount Jetters	24
• All In One Skid & Tank Units	25
• Hydrostatic Testers	25



Page 3



Page 13



Page 9



Page 15



Page 16

Fully Customizable All In
One Skid & Tank Package
Page 25



Pumps (PJ & General Pumps -GP)

- Commercial Duty Triplex Plunger Pumps
- Oil Bath Crank Case
- Stainless Valves
- Brass Manifold
- Direct Drive
- Thermo Pump Protector

Electric Motors (2, 5 & 7.5 HP)

- 1750 RPM • TEFC • Full Frame
- 1.15 Service Factor
- Thermo Overload Protection
- Continuous Duty

Electrical Control Panel

- Nema 4 • Water Tight • Easy Access
- Heavy Duty On/Off Cam Switch or Optional Auto Stop/Start with Time Delay

Frame

- Adjustable Pull Up Handle
- One Piece Bent Steel Base
- 3/4" Threaded Axles
- 13" Pneumatic Tires Attached with Lock Nuts On 2 & 5 HP Units
- 13" Foam Filled Tires Attached with Lock Nuts On 7.5 HP Units
- All Powder Coated
- Wall Mount and Hand Carry Frames Available

Includes

- Adjustable Pressure Regulator
- 36" Gun and Wand Assembly with Quick Coupler System
- 0°/15°/25°/40° Nozzles • 1 Soap Nozzle
- Downstream Soap Injection System
- 50 Feet of High Pressure Hose

Options & Accessories

- Auto Stop/Start
- Hose Reel
- Rotary Nozzle
- Drain Cleaning/Jetter Kit

Our electric driven cold water units are used for multiple applications for farm, car and truck washing, meat shops and every day uses.



PJ325E-GP-WM
with Wall Mount
Frame & Optional
Auto Stop/Start



PJ215E-HC
Hand Carry
Frame



PJ3624E with
Optional Auto Stop Start

**Improve Your Cleaning
Efficiency with an
Optional Auto Stop/Start**



MODEL	GPM	PSI	DRIVE RPM	HP/VOLTAGE	
PJ215E	2.2	1500	1750	2/110/1ph	*
Alternate Spec		1000		15 Amps	
PJ3624E	3.6	2400	1750	5/220/1ph	
PJ325E-GP	3.5	2400	1750	5/220/1ph	*
PJ403E	4	3000	1750	7.5/220/1ph	
PJ3636E	3.6	3600	1750	7.5/220/1ph	
PJ3035E-GP	3.5	3000	1750	7.5/220/1ph	*

Pumps (General Pumps)

- Industrial Heavy Duty Triplex Plunger Pump
- Oil Bath Crank Case • Stainless Valves
- Brass Manifold • Thermo Pump Protector

Electric Motors

- Heavy duty • 1750 RPM • TEFC • Full Frame
- 1.15 and 1.25 Service Factors • Thermo Overload Protection • Continuous Duty • High Efficiency

Drive (V-Belt or Flange & Coupling)

- Continuous Duty V-Belt Drive System with 11 Gauge Belt Guard or Flange & Coupling Drive

Electrical Control Panel

- Nema 4 • Water Tight • Easy Access • Heavy Duty On/Off Cam Switch or Optional Auto Stop/Start with Time Delay

Frame

- All Welded • Powder Coated • 1-1/2" Bent Steel Roll Cage • Lifting Bar • 1/4" Motor and Pump Mounting Plate • Mounted on Large 8" Casters • 400' Hose Reel (Optional) • Stationary Units also Available (Add -ST)

Includes

- Liquid Filled Pressure Gauge • Adjustable Pressure Regulator • Gun and Wand Assembly with Quick Coupler System • 0°/15°/25°/40° Nozzles • 1 Soap Nozzle
- Downstream Chemical Injection System • 50 Feet of High Pressure Hose

Ideal for use in processing plants, mills and factories for everyday reliable cleaning. Stationary frame options are available for facilities that require a piped in system for multiple location cleaning and or multiple gun use.

PJCI402EF-1 with Optional
250 Foot Hose Reel >

Stationary Unit with Tip Ahead
Shroud for Ease of Maintenance
(Add (-ST) to Model Number)

✓



Options

- VFD • PLC • Pressure Transducer



Intertek

MODEL	GPM	PSI	DRIVE	HP	VOLTAGE
PJCI402EF-1	4	2000	FLANGE/COUPLING	5	220V 1ph
PJCI402EF-3	4	2000	FLANGE/COUPLING	5	208/440/575V3ph
PJCI402E-1	4	2000	BELT	5	220V 1ph
PJCI402E-3	4	2000	BELT	5	208/440/575V 3ph
PJCI403EF-1	4	3000	FLANGE/COUPLING	7.5	220V 1ph
PJCI403EF-3	4	3000	FLANGE/COUPLING	7.5	208/440/575V 3ph
PJCI403E-1	4	3000	BELT	7.5	220V 1ph
PJCI403E-3	4	3000	BELT	7.5	208/440/575V 3ph
PJCI525EF-3	5	2500	FLANGE/COUPLING	7.5	208/440/575V 3ph
PJCI802E-3	8	2000	BELT	10	208/440/575V 3ph
PJCI603E-1	5.5	3000	BELT	10	220V 1ph
PJCI603E-3	5.5	3000	BELT	10	208/440/575V 3ph
PJCI404EF-1	4	4000	FLANGE/COUPLING	10	220V 1ph
PJCI404EF-3	4	4000	FLANGE/COUPLING	10	208/440/575V 3ph
PJCI1212E-3	12	1200	BELT	10	208/440/575V 3ph
PJCI6036E-3	6	3600	BELT	15	208/440/575V 3ph
PJCI6504E-3	6.5	4000	BELT	20	208/440/575V 3ph
PJCI505E-3	5	5000	BELT	20	208/440/575V 3ph
PJCI103E-3	10	3000	BELT	20	208/440/575V 3ph
PJCI1225E-3	12	2500	BELT	20	208/440/575V 3ph
PJCI8536E-3	8.5	3600	BELT	20	208/440/575V 3ph
PJCI4065E-1	4.3	6500	BELT	20	208/440/575V 3ph
PJCI407E-3	4	7000	BELT	20	208/440/575V 3ph
PJCI808E-3	8	8000	BELT	50	208/440/575V 3ph
PJCI6115E-3	6	11,500	BELT	50	208/440/575V 3ph
PJCI415E-3	4.5	15,000	BELT	50	208/440/575V 3ph

Pumps (PJ & General Pumps -GP)

- Commercial Duty Triplex Plunger Pumps
- Direct or Belt Driven (Power Band Belts)
- Oil Bath Crank Case
- Stainless Valves
- Brass Manifold
- Thermo Pump Protector

Engines (Kohler, Lifan & Honda)

- Gasoline Driven
- Efficient
- Serviceable

Frame

- Adjustable Pull Up Handle
- One Piece Bent Steel Base
- 3/4" Threaded Axles
- 13" Pneumatic Tires Attached with Lock Nuts On 6.5HP Units
- 13" Foam Filled Tires Attached with Lock Nuts On 13/14/15 HP Units
- All Powder Coated
- Wall Mount and Hand Carry Frames Available

Includes

- 36" Gun and Wand Assembly with Quick Coupler System
- 0°/15°/25°/40° Nozzles
- 1 Soap Nozzle
- Downstream Chemical Injection System
- 50 Feet of High Pressure Hose

Options & Accessories

- Hose Reel
- Drain Cleaning/Jetter Kit
- Wet Sandblast Kit
- Rotary Nozzle

The commercial cold water gasoline driven series are designed for everyday commercial cleaning jobs.



PJ273GK



PJ354GKGPBD

General Pump TS1511
Power Band Belt



Adjustable Pull
Up Handle

PJ404GK

MODEL	GPM	PSI	HP/ENGINE	DRIVE	
PJ273GL	3	2700	6.5 LIFAN	DIRECT	*
PJ273GK	3	2700	6.5 KOHLER	DIRECT	*
PJ273GH	3	2700	6.5 HONDA	DIRECT	*
PJ404GL	3.5	4000	15 LIFAN	DIRECT	
PJ404GK	3.5	4000	14 KOHLER	DIRECT	
PJ404GH	3.5	4000	13 HONDA	DIRECT	
PJ404GH-GP	4	4000	13 HONDA	DIRECT	*
PJ404GK-GP	4	4000	14 KOHLER	DIRECT	*
PJ354GHGPBD	4	3500	13 HONDA	POWER BAND BELT	
PJ354GKGPBD	4	3500	14 KOHLER	POWER BAND BELT	

Pumps (General Pumps)

- Industrial Duty Triplex Plunger Pumps
- Oil Bath Crank Case • Stainless Valves
- Brass Manifold • Thermo Pump Protector

Gas Engines (Kohler & Honda)

- Gasoline Driven • Efficient • Serviceable

Diesel Engines (Kohler & Kubota)

- Diesel Driven • Efficient • Serviceable

Drive (Power Band Belt or Gearbox)

- Continuous Duty Power Band Belt Drive System with 11 Gauge Belt Guard or Gearbox Drive

Frame

- All Welded • Powder Coated • 1-1/2" Bent Steel Roll Cage • Lifting Bar • 1/4" Motor and Pump Mounting Plate • 13" Solid Rubber Tires
- 10 Gallon Poly Fuel Tank on Over 20 HP Units
- Geared for a 400 Foot Hose Reel (Optional)
- PJC14035G have 2 - Wheeled Carts
- Stationary Units also Available

Includes

- Liquid Filled Pressure Gauge • Adjustable Pressure Regulator • 36" Gun and Wand Assembly with Quick Coupler System
- 0°/15°/25°/40° Nozzles • 50 Feet of High Pressure Hose

Options & Accessories

- Hose Reel • Rotary Nozzle • Drain Cleaning Kit
- Wet Sandblast Kit • Stationary Frame • Skid Frame with Water Tank

The industrial cold water gasoline driven units feature the toughest frames and components in the industry. These units are utilized by surface preparation and heavy duty blasting/cleaning contractors.



PJC1505G

Industrial Cold Water Gasoline				
MODELS	GPM	PSI	DRIVE	ENGINE
PJC14035G-K	4	3500	GEARBOX	14 HP KOHLER *
PJC14035G-H	4	3000	GEARBOX	13 HP HONDA
PJC16035G	6	3500	GEARBOX	25 HP KOHLER / 24 HP HONDA
PJC17036G	7	3600	POWER BAND BELT	25 HP KOHLER / 24 HP HONDA
PJC18035G	8	3500	POWER BAND BELT	25 HP KOHLER / 24 HP HONDA *
PJC17536G-JB	7.5	3600	GEARBOX JABSCO PUMP	25 HP KOHLER / 24 HP HONDA
PJC11225G	12	2500	POWER BAND BELT	38 HP KOHLER
PGC1030G	10	3000	POWER BAND BELT	38 HP KOHLER
PJC1505G	5	5000	POWER BAND BELT	25 HP KOHLER / 24 HP HONDA *
PJC14560G	4.5	6000	POWER BAND BELT	25 HP KOHLER / 24 HP HONDA
PJC14070G	4	7000	POWER BAND BELT	25 HP KOHLER / 24 HP HONDA *
Industrial Cold Water Diesel				
MODEL	GPM	PSI	DRIVE	ENGINE
PJC14032D	4	3200	POWER BAND BELT	9.8 HP KOHLER *
PJC15005D	5	5000	POWER BAND BELT	26 HP KOHLER
PJC14007D	4	7000	POWER BAND BELT	26 HP KOHLER *
PJC18008D	8	8000	GEARBOX	58 HP KUBOTA *
PJC16115D	6	11,500	BELT OR GEARBOX	58 HP KUBOTA
PJC14150D	4.5	15,000	BELT OR GEARBOX	58 HP KUBOTA

Pumps (General Pump & PJ pumps)

- Commercial Duty Triplex Plunger Pumps
- Oil Bath Crank Case • Stainless Valves
- Brass Manifold • Direct Drive
- Thermo Pump Protector

Electric Motors (2, 5 & 7.5 HP)

- 1750 RPM • TEFC • Full Frame
- 1.15 Service Factor
- Thermal Overload Protection
- Continuous Duty

Electrical Control Panel

- Nema 4 • Water Tight • Easy Access
- Heavy Duty On / Off Cam Switch or Optional Auto Stop / Start with Time Delay

Heating Coil

- Schedule 80 Pipe
- Elliptically Wound & Stretched
- No Seam Welds
- Structurally Braced to Reduce Vibration & Pipe Wear • Sealed with Ceramic Blanket
- Stainless Steel Housing

Burners

- Oil Fired • Adjustable Thermostat
- On/Off Switch • North American Made
- Dependable • Serviceable

Frame

- All Welded • Powder Coated
- 12 Gauge Bent Steel Roll Cage • Lifting Bar
- 3/4" Threaded Axles Welded to Frame
- 13" Foam Filled Wheels Attached with Lock Nuts • 10 Gallon Poly Fuel Tank
- Hose Reel Mounting Plate

Includes

- 36" Gun and Wand Assembly with Quick Coupler System • 0°/15°/25°/40° Nozzles
- 1 Soap Nozzle • Downstream Chemical Injection System • 50 Feet of High Pressure Hose

Options & Accessories

- Auto Stop/Start • Hose Reel
- Rotary Nozzle • Wet Sandblast Kit
- Water Broom • Drain Cleaning/Jetter Kit

Dependable, long lasting machines built for a multitude of applications. Heats water faster and hotter than our competitors.



PJO2015E with
Optional Auto
Stop/Start



PJO3636E

**Improve Your Cleaning
Efficiency with an
Optional Auto Stop/Start**



PJO3525E-GP with
Optional Auto Stop Start



MODEL	GPM	PSI	BTU	ELECTRIC DRIVE	HP/VOLTAGE
PJO2015E	2	1500	200,000	1750 RPM	2/110V/1ph *
PJO3424E	3.4	2400	350,000	1750 RPM	5/220V/1ph
PJO3525E-GP	3.5	2400	350,000	1750 RPM	5/220V/1ph *
PJO3636E	3.6	3600	350,000	1750 RPM	7.5/220V/1ph
PJO3530E-GP	3.5	3000	350,000	1750 RPM	7.5/220V/1ph *

Industrial Hot Water Electric - Oil Fired



Pumps (General Pump)

- Industrial Duty Triplex Plunger Pumps • Oil Bath Crank Case
- Stainless Valves • Brass Manifold • Thermo Pump Protector

Electric Motors (2, 5, 7.5, 10, 15, 20 & 50 HP)

- 1750 RPM • TEFC • Full Frame • 1.15 Service Factor
- Thermal Overload Protection • Continuous Duty
- 3 Phase (High Efficiency)

Electrical Control Panel

- Nema 4 • Water Tight • Easy Access • Heavy Duty On / Off Cam Switch Or Optional Auto Stop / Start With Time Delay

Heating Coil

- Schedule 80 & 160 Pipe • Elliptically Wound & Stretched • No Seam Welds • Structurally Braced To Reduce Vibration & Pipe Wear • Sealed with Ceramic Blanket • Stainless Steel Housing • Thermostat Controlled

Burners

- Oil Fired • Adjustable Thermostat • On/Off Switch
- Cleanable Fuel Filters • North American Made
- Dependable • Serviceable

Frame

- All Welded • Powder Coated • Heavy Gauge Bent One Piece Plate • Tip Ahead Shroud With Built in Belt Guard Designed to Fully Expose All Components for Ease of Maintenance • 10 Gallon Poly Fuel Tank (15+ HP Fuel Tank Optional) • Hose Reel Compatible • Portable Units Are Mounted On Two 13" Solid Rubber Tires And Two 8" Heavy Duty Casters (Optional) • Stationary Units Built with Skid Style Frame (See Right)

Includes

- Liquid Filled Pressure Gauge • Adjustable Pressure Regulator
- 48" Gun And Wand Assembly with Quick Coupler System
- 0°/15°/25°/40° Nozzles • 1 Soap Nozzle
- Chemical Injection System • 50 Feet Of High Pressure Hose

Options & Accessories

- Auto Stop/Start • Hose Reel • Wheel Kit • VFD • PLC
- Pressure Transducer • Remote Control



Tip Ahead Shroud
with Integrated
Belt Guard



PJO4003-1 with
Optional Auto
Stop/Start



MODEL	GPM	PSI	BTU	DRIVE	HP	VOLTAGE
PJO4002F-1	4	2000	400,000	FLANGE/COUPLING	5	220V-1PH
PJO4002-1	4	2000	400,000	BELT	5	220V-1PH
PJO4002F-3	4	2000	400,000	FLANGE/COUPLING	5	208/440/575 V-3PH
PJO4002-3	4	2000	400,000	BELT	5	208/440/575 V-3PH
PJO4003F-1	4	3000	400,000	FLANGE/COUPLING	7.5	220V-1PH
PJO4003-1	4	3000	400,000	BELT	7.5	220V-1PH
PJO4003F-3	4	3000	400,000	FLANGE/COUPLING	7.5	208/440/575 V-3PH
PJO4003-3	4	3000	400,000	BELT	7.5	208/440/575 V-3PH
PJO5003-1	5	3000	500,000	BELT	10	220V-1PH
PJO5003-3	5	3000	500,000	BELT	10	208/440/575 V-3PH
PJO4004F-1	4	4000	400,000	FLANGE/COUPLING	10	220V-1PH
PJO4004-3	4	4000	400,000	BELT	10	208/440/575 V-3PH
PJO8002-1	8	2000	800,000	BELT	10	220V-1PH
PJO6036-3	6	3600	600,000	BELT	15	208/440/575 V-3PH
PJO8003-3	8	3000	800,000	BELT	20	208/440/575 V-3PH
PJO8036-3	8	3600	800,000	BELT	20	208/440/575 V-3PH
PJO1030-3	10	3000	1,000,000	BELT	20	208/440/575 V-3PH
PJO1225-3	12	2500	1,200,000	BELT	20	208/440/575 V-3PH
PJO5005-3	5	5000	500,000	BELT	20	208/440/575 V-3PH
PJO4006-3	4	6000	400,000	BELT	20	208/440/575 V-3PH
PJO4007-3	4	7000	400,000	BELT	20	208/440/575 V-3PH
PJO8008-3	8	8000	800,000	BELT	50	440/575 V-3PH

Ideal for in-plant, service shop and wash bay systems. These are the most efficient, long lasting machines on the market. Simple in design for ease of maintenance and usability.

**Industry professionals say:
"This machine is a game changer."**

HOTTER, FASTER & MORE EFFICIENT

Options & Accessories

- Auto Stop Start
- Hose Reel
- Rotary Nozzle
- Draft Hoods
- Wheel Kits
- Stainless Steel Coils
- VFD
- PLC Control
- Second Pumping Systems
- Soap Solenoid & Switch
- Remote Station
- Steam Kit
- Dual Gun Kit
- Leg Stands
- Remote Control
- * Propane Fired (PJP)



Unit Shown with
Shroud Tipped Ahead

PJN8003-3-440
with Optional Auto
Stop/Start



MODEL	GPM	PSI	BTU	DRIVE	HP	VOLTAGE
PJN2015-1	2	1500	195,000	DIRECT	2	120V-1PH
PJN3524E-1	3.5	2400	290,000	DIRECT	5	220V-1PH
PJN3530E-1	3.5	3000	290,000	DIRECT	7.5	220V-1PH
PJN4002F-1	4	2000	390,000	FLANGE/COUPLING	5	220V-1PH
PJN4002-1	4	2000	390,000	BELT	5	220V-1PH
PJN4002F-3	4	2000	390,000	FLANGE/COUPLING	5	208/440/575 V-3PH
PJN4002-3	4	2000	390,000	BELT	5	208/440/575 V-3PH
PJN4003F-1	4	3000	390,000	FLANGE/COUPLING	7.5	220V-1PH
PJN4003-1	4	3000	390,000	BELT	7.5	220V-1PH
PJN4003F-3	4	3000	390,000	FLANGE/COUPLING	7.5	208/440/575 V-3PH
PJN4003-3	4	3000	390,000	BELT	7.5	208/440/575 V-3PH
PJN5003-1	5	3000	390,000	BELT	10	220V-1PH
PJN5003-3	5	3000	390,000	BELT	10	208/440/575V-3PH
PJN5003-HT-1	5	3000	510,000	BELT	10	220V-1PH
PJN5003-HT-3	5	3000	510,000	BELT	10	208/440/575 V-3PH
PJN4004F-1	4	4000	390,000	FLANGE/COUPLING	10	220V-1PH
PJN4004-3	4	4000	390,000	BELT	10	208/440/575 V-3PH
PJN8002-1	8	2000	720,000	BELT	10	220V-1PH
PJN6036-3	6	3600	560,000	BELT	15	208/440/575 V-3PH
PJN8003-3	8	3000	720,000	BELT	20	208/440/575 V-3PH
PJN8036-3	8	3600	720,000	BELT	20	208/440/575 V-3PH
PJN1030-3	10	3000	940,000	BELT	20	208/440/575 V-3PH
PJN1225-3	12	2500	940,000	BELT	20	208/440/575 V-3PH
PJN5005-3	5	5000	510,000	BELT	20	208/440/575 V-3PH
PJN4006-3	4	6000	390,000	BELT	20	208/440/575 V-3PH
PJN4007-3	4	7000	390,000	BELT	20	208/440/575 V-3PH
PJN8008-3	8	8000	720,000	BELT	50	440/575 V-3PH

Innovative Features

Quick Clean Burner System

Each model is equipped with a quick clean burner system. Your burner orifices should be cleaned every 6 months and this system makes it easy to do so. You simply disconnect the wiring harness, remove 2 bolts and your burner will slide out with ease. Once you have cleaned your burner the apparatus will easily slide back into place with a little push. Quick and Easy Maintenance.



Quick Adjust Air Flow Vents

The Quick Adjust Air Flow vents allow you to adjust the amount of air that is flowing into the burner chamber. This adjustment allows you to maximize the efficiency of the burner by fine tuning the CO levels to optimize emission levels. These vents allow you to adjust your air flow quickly and simply.



Tip Ahead Shroud with Integrated Belt Guard

The tip ahead shroud allows you to easily access all of your motor and pump components in seconds. You simply loosen the T-Nuts on both sides of the unit and pull the shroud forward. The belt guard is integrated into the design of the shroud for maximum serviceability and safety. This ensures that your belt and pulley system will never be exposed.



Nema 4 Water Tight Control Panel

Electrical Nema 4 water tight control panels complete with hinged covers are utilized for easy service access. No unnecessary electronics are used when designing these units, making service and diagnostics simple. Available with standard on/off switch or optional auto start/stop timer shutdown.



Standard Features

Electric Motors

Totally enclosed fan cooled full frame 1750 RPM electric motors. Single phase equipped with a 1.15 service factor, 3 phase equipped with a 1.25 service factor, both are high efficiency. Voted the #1 motor at international trade shows in 2014.

General Pumps

Italian made industrial heavy duty triplex plunger pump with oil bath crankcases, stainless valves and brass manifolds. General Pumps are the most widely used pumps in the world.

Drive Systems

Belt Drive - large diameter pulleys are used to reduce belt wear.

Flange and Coupling Drive - Available for those who do not prefer belt drives.

Heating Coil

Elliptically wound cold process of stretched reduced full body normalized ASTM A53/APIPSL schedule 80 or 160 pipe. The coil is structurally braced to minimize pipe wear and vibration. It is sealed with a ceramic blanket in a stainless steel housing.

Burners

Quality North American made natural gas or propane fired burners and controls with adjustable thermostats are used for efficiency, dependability and serviceability. Units are equipped with quick clean burner apparatuses. Burners jets have 6 oxygen orifice inlets to ensure maximum burn and minimize CO results.

Frame

Rugged 11 gauge and 1/4" bent one piece plate steel frame is fully welded with a powder coat finish. Frames are equipped with 11 gauge steel shrouds with integrated belt guards for maximum serviceability.

Also Includes

These units include: gun and wand assembly, 50 feet of high pressure hose, high pressure chemical injection, 5 nozzles and poly float tanks on 4 - 12 GPM units.

Pumps (General Pumps)

- Industrial Heavy Duty Triplex Plunger Pumps • Oil Bath Crank Case
- Stainless Valves • Brass Manifold • Thermo Pump Protector • Belt Or Flange & Coupling Driven

Electric Motors (3, 5, 7.5, 10 & 20 HP)

- 1750 RPM • TEFC • Full Frame • 1.15 and 1.25 Service Factors
- Thermo Overload Protection • Continuous Duty

Heater

- 316 Stainless Steel Heat Exchanger Coil • Designed For Continuous Use
- Large 70 Gallon (Single Coil Models) & 120 Gallon (Dual Coil Models) Heater Storage Tanks • Allows for Continuous Recovery Even When Trigger Gun (s) Not in Use • No Open Flame • Can be Installed in Virtually Any Location • Compact Foot Print • Standard and Explosion Proof Models • No Venting Required • Heater Exchanger Coils Do Not Require Decalcification • Require Less KW Than Input Direct-immersion Type Electrically Heated Models • Low Heat Exchanger Solution Cut-Off Switch • Adjustable Temperature Controller • Pin- Type Calrod Heating Elements With Incoloy Sleeves

Frame

- All Welded - Powder Coated • 11 Gauge Bent Steel Tip Ahead Shroud Designed To Expose All Components for Ease of Service

Includes

- Liquid Filled Pressure Gauge • Adjustable Pressure Regulator • 48" Gun and Wand Assembly with Quick Coupler System • 0°/15°/25°/40° Nozzles • 50 Feet of High Pressure Wash Hoses (8 - 10 GPM Units Come with 2 Gun & Wand Assemblies & 50 Feet of High Pressure Hose)

Options & Accessories

- Full Range of Portable Frames • Stainless Steel Covers and Heater Skins • 50HZ Models • ASME B31.1 • 2004 (Power Piping) Code • Compliant Models Available And Explosion Proof Units.
- VFD • PLC Control • Remote Control



Utilized by:
Mines, Mills,
Refineries,
Service Shops
and Food
Processing
Plants.



MODEL	GPM	PSI	HEATER INPUT	MOTOR HP	TOTAL AMP 3PH			Dimensions L" x W" x H"
					208	460	575	
PJE114E24A	4	1200	24KW	3	72.5	33.3	26.6	32x24x52
PJE114E48A	4	1200	48KW	3	134.8	62.2	49.7	32x24x52
PJE204E24	4	2000	24KW	5	77.1	35.5	28.4	32x24x52
PJE204E48A	4	2000	48KW	5	139.6	64.4	51.8	32x24x52
PJE204E72A	4	2000	72KW	5	N/A	93.3	74.4	32x24x52
PJE304E24A	4	3000	24KW	7.5	85	39.1	31.3	32x24x52
PJE304E48A	4	3000	48KW	7.5	147.5	68	54.4	32x24x52
PJE304E72A	4	3000	72KW	7.5	N/A	96.5	76.9	32x24x52
PJE404E48A	4	4000	48KW	10	154	70.9	56.7	32x24x52
PJE404E72A	4	4000	72KW	10	N/A	99.8	79.9	32x24x52
PJE504E48A	4	5000	48KW	15	N/A	75.9	60.7	38x28x55
PJE504E72A	4	5000	72KW	15	N/A	104.8	83.9	38x28x55
PJE505E48A	5	5000	48KW	20	N/A	82.8	66.5	38x28x55
PJE505E72A	5	5000	72KW	20	N/A	112.2	89.8	38x28x55
PJE355E48A	5	3500	48KW	10	154	70.9	56.7	32x24x52
PJE355E72A	5	3500	72KW	10	N/A	99.8	79.9	32x24x52
PJE256E48A	5.6	2000	48KW	7.5	147.5	68	54.4	32x24x52
PJE256E72A	5.6	2000	72KW	7.5	N/A	96.9	77.6	32x24x52
PJE126E48A	6	1200	48KW	5	139.6	64.4	51.8	32x24x52
PJE206E48A	6	2000	48KW	10	147.5	68	54.4	53x48x40
PJE206E72A	6	2000	72KW	10	N/A	96.9	77.6	53x48x40
PJE1208E48A	8	1200	48KW	7.5	147.5	68	54.4	53x48x40
PJE1208E72A	8	1200	72KW	7.5	N/A	96.9	77.6	53x48x40
PJE208E48A	8	2000	48KW	10	154	70.9	56.7	53x48x40
PJE208E72A	8	2000	72KW	10	N/A	99.8	79.9	53x48x40
PJE308E48A	8	3000	48KW	15	165	75.9	60.7	53x48x40
PJE308E72A	8	3000	72KW	15	N/A	104.8	83.9	53x48x40
PJE3010E72A	10	3000	72KW	20	N/A	112.2	89.8	53x48x40
PJE3010E96A	10	3000	96KW	20	N/A	141.3	113.1	53x48x40
PJE3010E115A	10	3000	115KW	20	N/A	164.3	131.4	53x48x40

Pumps (General Pumps & Cat Pumps)

- Industrial Duty Triplex Plunger Pumps • Oil Bath Crank Case • Stainless Valves • Brass Manifold
- Direct Drive • Thermo Pump Protector

Electric Motors

- 1750 RPM • TEFC • Full Frame • 1.15 Service Factor
- Thermo Overload Protection • Continuous Duty

Hydraulic Drive

- Industrial Continuous Duty Serviceable Gear Motors Direct or Belt Driven, to be Mounted in Compact Space Where Hydraulic Power Fluid is Available

Electric Clutch

- Heavy Duty Clutch Specifically Matched for Each Pump, Geared To Mount on Front of Diesel Engine for Every Day Washing on Barges, Work Boats and Fishing Boats

Frame

- Compact 12 Gauge and ¼" Frame Assembly
- All Powder Coated or Stainless Steel (Optional)

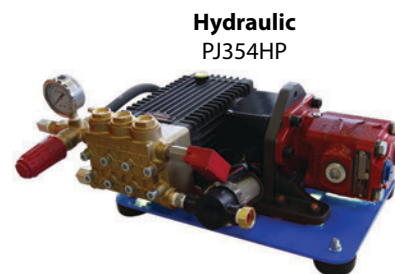
Includes

- Liquid Filled Pressure Gauge • Adjustable Pressure Regulator • 36" Gun and Wand Assembly with Quick Coupler System • 4 Wash Nozzles
- 1 Soap Nozzle • Downstream Soap Injection System • 50 Feet of High Pressure Hose

These units are designed to be mounted on a truck, fishing and work-boats. Utilized by industry professionals that need high pressure on location.



Electric Clutch
PJ354EC



Hydraulic
PJ354HP



Electric Motor
PJ304E-A



Truck & Marine Series - Hydraulic

MODEL	GPM	PSI	DRIVE	POWER
PJ303HP	3	3000	COUPLING	6 GPM @ 2000 PSI
PJ354HP	4	3500	COUPLING	7 GPM @ 2000 PSI
PJ366HP	6	3500	COUPLING	9 GPM @ 2000 PSI
PJ309HP	9	3000	COUPLING	16 GPM @ 2000 PSI
PJ408HP	8	4000	V-BELT	18 GPM @ 2000 PSI
PJ505HP	5	5000	COUPLING	18 GPM @ 2000 PSI
PJ4020HP	20	4000	COUPLING	54 GPM @ 2000 PSI

Truck & Marine Series - Electric Clutch

MODEL	GPM	PSI	DRIVE	POWER	VOLTAGE
PJ204EC	4	2000	V-BELT	5 BHP	12 VOLTS
PJ354EC	5	3500	V-BELT	10 BHP	12 VOLTS
PJ408EC	8	4000	V-BELT	20 BHP	12 VOLTS

Marine Series - Electric Motor

MODEL	GPM	PSI	DRIVE	POWER	VOLTAGE
PJ204E-A	4	2000	FLANGE & COUPLING	5 HP	220/1PH
PJ204E-A-3	4	2000	FLANGE & COUPLING	5 HP	230/440/575V 3PH
PJ304E-A	4	3000	FLANGE & COUPLING	7.5 HP	220/1PH
PJ304E-A-3	4	3000	FLANGE & COUPLING	7.5 HP	230/440/575V 3PH
PJ404E-A	4	4000	FLANGE & COUPLING	10 HP	220/1PH
PJ404E-A-3	4	4000	FLANGE & COUPLING	10 HP	230/440/575V 3PH

Pumps (PJ & General Pumps)

- Commercial Duty Triplex Plunger Pump • Oil Bath Crank Case • Stainless Valves • Brass Manifold • Direct drive
- Thermo Pump Protector

Engines (Kohler, Lifan & Honda)

- Gasoline or Diesel Driven • Efficient
- Serviceable

Heating Coil

- Schedule 80 Pipe • Elliptically Wound & Stretched • No Seam Welds
- Structurally Braced to Reduce Vibration & Pipe Wear • Sealed with a Ceramic Blanket • Stainless Steel Housing

Burners (Wayne - 120 & 12 Volt)

- Oil Fired • Adjustable Thermostat
- On/Off Switch • North American Made
- Dependable • Serviceable

Frame

- All Welded • Powder Coated
- 12 Gauge Bent Steel Roll Cage
- Lifting Bar • 3/4" Threaded Axles Welded to the Frame • 13" Foam Filled Wheels Attached with Lock Nuts
- 10 Gallon Poly Fuel Tank • Hose Reel Mounting Plate • Stationary Skid Frame also Available

Includes

- 36" Gun and Wand Assembly with Quick Coupler System • 0°/15°/25°/40° Nozzles • 1 Soap Nozzle • Downstream Chemical Injection System • 50 Feet of High Pressure Hose

Options & Accessories

- Hose Reel • Rotary Nozzle
- Drain Cleaning/Jetter Kit • Wet Sandblast Kit



PJO3504-12-K-GP



Commercial Hot Water Gas - Oil Fired

MODEL	GPM	PSI	BTU	HP/ Engine	DRIVE	ELECTRIC START	BURNER
PJO3027G	3	2700	300,000	6.5 KOHLER	DIRECT	NO	120V *
PJO3504-R-K-GP	4	4000	350,000	14 KOHLER	DIRECT	NO	120V
PJO3504-R-H-GP	3.5	4000	350,000	13 HONDA	DIRECT	NO	120V
PJO3504-120-K-GP	4	4000	350,000	14 KOHLER	DIRECT	YES	120V
PJO3504-120-H-GP	3.5	4000	350,000	13 HONDA	DIRECT	YES	120V
PJO3504-12-L-GP	4	4000	350,000	15 LIFAN	DIRECT	YES	12V
PJO3504-12-K-GP	4	4000	350,000	14 KOHLER	DIRECT	YES	12V *
PJO3504-12-H-GP	3.5	4000	350,000	13 HONDA	DIRECT	YES	12V
PJO4035-K-G	4	3500	400,000	14 KOHLER	GEARBOX	YES	12V *
PJO4035-H-G	4	3000	400,000	13 HONDA	GEARBOX	YES	12V

Commercial Hot Water Diesel - Oil Fired

MODEL	GPM	PSI	BTU	HP/ Engine	DRIVE	ELECTRIC START	BURNER
PJO3504D-12-K-GP	3.5	4000	350,000	9.8 KOHLER	DIRECT	YES	12V *
PJO4035D-K	4	3500	400,000	9.8 KOHLER	GEARBOX	YES	12V *

Portable Pickup Truck Skid



Pumps (General Pump)

- Heavy Duty Triplex Plunger Pumps
- Oil Bath Crank Case
- Stainless Valves
- Brass Manifold
- Gearbox Drive
- Thermo Pump Protector

Engines

- 14 HP Kohler Gasoline Engine or 9.8 HP Kohler Diesel Engine
- Efficient • Serviceable

Heating Coil

- Schedule 80 Pipe
- Elliptically Wound & Stretched
- No Seam Welds
- Structurally Braced to Reduce Vibration & Pipe Wear
- Sealed with a Ceramic Blanket
- Stainless Steel Housing

Burners (Wayne - 12 Volt)

- Oil Fired
- Adjustable Thermostat
- On/Off Switch
- North American Made
- Dependable
- Serviceable

Frame

- 2 x 4 Tube Fully Welded Steel
- Powder Coated
- Lifting Eye
- Forklift Slots
- 225 Gallon Poly Water Tank
- 10 Gallon Winterization System

Includes

- Hose Reel
- 36" Gun and Wand Assembly with Quick Coupler System
- 0°/15°/25°/40° Nozzles • 1 Soap Nozzle
- Downstream Soap Injection System
- 100 Feet of High Pressure Hose

Options & Accessories

- Drain Cleaning/Jetter Kit
- Rotary Nozzle
- Wet Sandblast Kit

The Power Jet Portable Skid Unit is a totally self contained system that allows for 100% portable cleaning. These units have been designed to fit perfectly into the 6' 6" box of a pickup truck. Forklift slots and a lifting eye make loading this unit easy and efficient. There is also a built in winterization system which makes year round cleaning and transportation possible.

**Propane Fired Units Are Available
for Food Warehouse Applications
(Modified for Two 100lb Propane Tanks)**



PJO4035-K-G-PSR



MODEL	GPM	PSI	BTU	HP/ Engine	Fuel	DRIVE	ELECTRIC START	BURNER
PJO4035-K-G-PSR	4	3500	400,000	14 KOHLER	Gasoline	GEARBOX	YES	12V *
PJO4035-K-D-PSR	4	3500	400,000	9.8 KOHLER	Diesel	GEARBOX	YES	12V *

Pumps (General Pumps)

- Industrial Heavy Duty Triplex Plunger Pumps • Oil Bath Crank Case • Stainless Valves • Brass Manifold • Thermo Pump Protector • Belt or Gearbox Driven

Engines (Kohler & Honda)

- Gasoline Driven • Efficient • Serviceable

Heating Coil

- Schedule 80 & 160 Pipe • Elliptically Wound & Stretched • No Seam Welds • Structurally Braced to Reduce Vibration & Pipe Wear
- Sealed With Ceramic Blanket • Stainless Steel Housing

Burners (Wayne 12& 120 Volt)

- Oil Fired • Adjustable Thermostat • On/Off Switch • North American Made • Cleanable Fuel Filter • Dependable • Serviceable

Compact Frame

- All Welded • Powder Coated • 1 1/2" Bent Steel Cage with 3/16" mounting Plate
- Lifting Bar • All Mounting Bolts are Welded to the Frame for Ease of Service
- 10 Gallon Gas Tank • 20 Gallon Oil Tank
- Designed to be Truck or Trailer Mounted
- Skid Frame Design • Hose Reel Compatible

Includes

- Adjustable Pressure Regulator • 48" Gun & Wand Assembly With Quick Coupler System • 0°/15°/25°/40° Nozzles
- 50 Feet of High Pressure Hose

Options & Accessories

- 2000 Watt Generator • Steam Kit
- Hose Reel
- All In One Skid & Water Tank Frames
- Open and Enclosed Trailer Packages
- Certified Lift Cages
- Electric Clutch
- Drain Cleaning/Jetter Kit

- Add (-WK) for Wheel Kit
- Add (-STM) for Steam Kit
- Add (-G) for Generator & 120 Volt Burner

This series of hot water pressure washers are designed to be truck or trailer mounted for mobile washing purposes. These units are ideal for use within municipal, mining, oil field, forestry and industrial cleaning operations. These units can also be mounted on a skid frame in combination with 225, 550 or 630 gallon water tanks and a variety of hose reel and accessory options to create a totally customizable self contained system.



MODEL	GPM	PSI	BTU	HP	DRIVE
PJO3015GSTM-K	1.5	3000	400,000	14 KOHLER	POWER BAND BELT
PJO4003G	4	3000	400,000	13 HONDA	POWER BAND BELT
PJO4003GBG	4	3500	400,000	14 KOHLER	GEARBOX
PJO4035G	4	3500	400,000	14 KOHLER	POWER BAND BELT *
PJO5035G	5	3500	500,000	25 KOHLER/24 HONDA	POWER BAND BELT
PJO6035G	6	3500	600,000	25 KOHLER/24 HONDA	POWER BAND BELT *
PJO8030G	8	3000	800,000	25 KOHLER/24 HONDA	POWER BAND BELT *
PJO1030G	10	3000	1,000,000	38 KOHLER	POWER BAND BELT
PJO8037G	8	3700	800,000	38 KOHLER	POWER BAND BELT
PJO5005G	5	5000	500,000	25 KOHLER/24 HONDA	POWER BAND BELT *
PJO4006G	4	6000	400,000	25 KOHLER/24 HONDA	POWER BAND BELT
PJO6006G	6	6000	600,000	38 KOHLER	POWER BAND BELT
PJO4007G	4	7000	400,000	25 KOHLER/24 HONDA	POWER BAND BELT *

Industrial Hot Water Diesel - Oil Fired



Pumps (General Pumps)

- Industrial Heavy Duty Triplex Plunger Pumps
- Oil Bath Crank Case • Stainless Valves
- Brass Manifold • Thermo Pump Protector
- Belt Or Gearbox Driven

Engine (Kohler & Kubota)

- Diesel Driven • Efficient • Serviceable

Heating Coil

- Schedule 80 & 160 Pipe • Elliptically Wound & Stretched • No Seam Welds • Structurally Braced to Reduce Vibration & Pipe Wear • Sealed with a Ceramic Blanket • Stainless Steel Housing

Burners (Wayne 120 Volt & 12 Volt)

- Oil Fired • Adjustable Thermostat • On/Off Switch • North American Made • Dependable
- Serviceable

Frame

- Extremely Heavy Duty 2" Square Tubing & 1/4" Mounting Plates • All Welded • Powder Coated
- All Mounting Bolts are Welded to the Frame for Ease of Service • Lifting Eye • Fork Lift Slots
- Convenient Control Panel • 20 Gallon Diesel Engine Fuel Tank (8 & 10 GPM Systems Do Not Include Fuel Tank) • 58 HP Units (2"x4" Steel Tubing with 1/2" Mounting Plate)

Includes

- Adjustable Pressure Regulator • 48" Gun And Wand Assembly With Quick Coupler System
- 0°/15°/25°/40° Nozzles • 50 Feet Of High Pressure Hose

Options & Accessories

- Steam Kit - Add (-STM)
- Hose Reel
- All In One Skid & Water Tank Frames
- Open and Enclosed Trailer Packages
- Certified Lift Cages
- Electric Clutch
- Drain Cleaning/Jetter Kit
- 40 Gallon Poly Fuel Tank
- 48 & 100 Gallon Steel Fuel Tanks
- Add (-G) for Generator & 120 Volt Burner

This series of hot water pressure washers are designed to be truck or trailer mounted for mobile washing purposes. These units are ideal for use within municipal, mining, oil field, forestry and industrial cleaning operations. These units can also be mounted on a skid frame in combination with 225, 550 or 630 gallon water tanks and a variety of hose reel and accessory options to create a totally customizable self contained system.



MODEL	GPM	PSI	BTU	HP	DRIVE
PJO4032D	4	3200	400,000	9.8 KOHLER	POWER BAND BELT
PJO6035D	6	3500	600,000	26 KOHLER	POWER BAND BELT
PJO8035D	8	3500	800,000	26 KOHLER	POWER BAND BELT
PJO1030D	10	3000	900,000	26 KOHLER	POWER BAND BELT *
PJO5005D	5	5000	500,000	26 KOHLER	POWER BAND BELT *
PJO1050D	10	5000	900,000	58 KUBOTA	GEARBOX
PJO4006D	4	6000	400,000	26 KOHLER	POWER BAND BELT
PJO4007D	4	7000	400,000	26 KOHLER	POWER BAND BELT *
PJO8008D	8	8000	900,000	58 KUBOTA	GEARBOX *
PJO60115D	6	11,500	800,000	58 KUBOTA	GEARBOX

Heating Coil

Elliptically wound cold process of stretched reduced fully body normalized ASTM A53/APIPSL schedule 80 or optional 160 pipe is structurally braced to minimize pipe wear and vibration. The coil is sealed with a ceramic blanket and enclosed in a stainless steel housing for heating efficiency. These coils have been specially designed to be paired with the burners for maximum heating and fuel efficiency. The coils are securely mounted to the frames to reduce vibration and enhance ease of maintenance. Wet/dry steam option available. (Optional up to 11,500 PSI Coils)

Burners (Wayne)

Quality North American made oil fired burners with adjustable thermostats are used due to their efficiency and durability. Safety features include: flow switch, rupture disc, high limit and adjustable thermostat.

Control Panel

Nema 4 water tight control panels are utilized.

Frames

Industrial grade frames are fully welded and powder coated for longevity. Install ready.

Cabinets

The frame is constructed of one piece of 11 gauge steel that is box bent with a 1/4 inch steel coil base(Fully welded and powder coated). The unit is equipped with two service panels at the base of the unit and a removable top for quick and easy coil removal. Stainless steel hinges and fasteners are also utilized. Install ready for Vacuum and Hydro Vac Trucks. (VCB Models)

Optional Pump Systems

Hydraulic, electric, gasoline and diesel driven pump systems are available to pair with these units

Redundancy packages, various types of thermostats, flow switches and safety features are also available to meet your specifications.

Install ready for vacuum and hydro vac trucks. Rugged heavy gauge cabinets and frames for durability even in severe road conditions.



PJ440VCB



MODEL	GPM	PSI	BTU	VOLTAGE
PJ200	2 to 4	5000	200,000	120 or 12
PJ350	3 to 5	5000	350,000	120 or 12
PJ400	4 to 6	5000	400,000	120 or 12
PJ440 / PJ440VCB	4 to 10	5000	440,000	120 or 12
PJ600 / PJ600VCB	5 to 6	5000	600,000	120 to 12
PJ700-(1/2) / PJ700-(1/2)VCB	6 to 10	5000	700,000	120 or 12
PJ700-(3/4) / PJ700-(3/4) VCB	6 to 12	3500	700,000	120 or 12
PJ800-(1/2)	6 to 10	5000	800,000	120 or 12
PJ900-(3/4) / PJ900VCB-(3/4)	10 to 12	3500	900,000	120 or 12
PJ1000-(3/4) / PJ1000VCB-(3/4)	10 to 20	3500	1,000,000	120
PJ1200-(3/4)	12 to 25	3500	1,200,000	120
PJ1800-(1)	15 to 30	2500	1,800,000	120

Modular Hot Water Heaters - Gas Fired or Electric



Natural Gas or Propane Fired

Heating Coil

- Schedule 80 or optional 160 Pipe (up to 11,500 PSI) • Elliptically Wound & Stretched • No Seam Welds • Structurally Braced to Reduce Vibration & Pipe Wear • Sealed with Ceramic Blanket
- Stainless Steel Housing • Thermostat Controlled • Optional Stainless Steel Coil

Burners

- Natural Gas or Propane Fired • Natural Aspirated Ring Cast Burner • Six Oxygen Port Brass Burner Nozzles for Lower Emissions Controlled 24 Volt Gas Valves • Quick Clean Burner System • Quick Adjust Air Flow Vents (Enclosed Design to Allow for Optimum Air Flow to Maximize Efficiency)

Safety Features

- Flow switch • Rupture Disc • High Limit • Adjustable Thermostat • Gas Pressure Gauge

Frame

- 11 gauge to 1/4" steel • All Welded • Fully Powder Coated

Electrically Heated Heater

- 316 Stainless Steel Heat Exchanger Coil • Designed for Continuous Use • Large 70 Gallon (Single Coil Models) & 120 Gallon (Dual Coil Models) Heater Storage Tanks • Allows for Continuous Recovery Even When Trigger Gun (s) Not in Use
- No Open Flame • Can be Installed in Virtually Any Location
- Compact Foot Print • Stand and Explosion Proof Models
- No Venting Required • Heater Exchanger Coils Do Not Require Decalcification • Require Less KW Than Input
- Direct-immersion Type Electrically Heated Models • Low Heat Exchanger Solution Cut-Off Switch • Adjustable Temperature Controller • Pin-Type Calrod Heating Elements With Incoloy Sleeves

Stand alone heaters designed for heating high pressure water efficiently.



PJ560GF



Natural Gas (-N) & Propane (-P) Fired Heaters				
MODEL	GPM	PSI	INPUT	VOLTAGE
PJ195GF	2 to 3	2000	195,000 BTU	24 Volt
PJ295GF	3 to 4	3500	295,000 BTU	24 Volt
PJ390GF	4 to 5	5000	390,000 BTU	24 Volt
PJ510GF	5	5000	510,000 BTU	24 Volt
PJ560GF	6	5000	560,000 BTU	24 Volt
PJ720GF	8	3500	720,000 BTU	24 Volt
PJ940GF	10 to 12	3500	940,000 BTU	24 Volt
Electrically Heated				
MODEL	GPM	PSI	INPUT	
PJE24	6	4000	24 kw	
PJE48	6	4000	48 kw	
PJE72	6	4000	72 kw	
PJE48-2	12	4000	48 kw	
PJE72-2	12	4000	72 kw	
PJE99-2	12	4000	99 kw	

This stationary unit is always hooked up and ready to use. With a squeeze of the trigger gun you're ready to clean. It's easy, safe and exactly what your fire station or detailing shop needs.



Pumps (PJ & General Pumps)

- Commercial Duty Triplex Plunger Pumps
- Oil Bath Crank Case
- Stainless Valves
- Brass Manifold
- Direct Drive
- Thermo Pump Protector

Electric Motors

- 1750 RPM • TEFC • Full Frame
- 1.15 Service Factor
- Thermo Overload Protection
- Continuous Duty



Electrical Control Panel

- Nema 4 • Water Tight • Easy Access
- Trigger Gun Controlled Auto Stop/Start with Time Delay

Frame

- 2 x 2 Square Tubing
- Compact
- Ready to Install Against a Wall or Bolt to the Floor

Includes

- Adjustable Pressure Regulator
- 36" Gun and Wand Assembly with Quick Coupler System
- High Pressure Chemical Injection
- Hose Reel
- 100 Feet of Non-Marking High Pressure Hose

Options & Accessories

- Rotary Nozzle
- Water Broom (Ideal for Washing Floors & Fire Hose)
- Foam Cannon

NEVER WORRY ABOUT GASOLINE, TANGLED HOSES OR GEARING UP YOUR PORTABLE PRESSURE WASHER AGAIN!



FD2040E



MODEL	GPM	PSI	HP	VOLTAGE	ELECTRIC DRIVE
PFD2040E	4	2000	5	220V - 1PH	1750 RPM
PFD2435E-GP	3.5	2400	5	220V - 1PH	1750 RPM
PFD3025E-GP	3.5	3000	7.5	220V - 1PH	1750 RPM

RV & Car Lot Wash Trailer



Pumps

- Heavy Duty Triplex Plunger Pumps
- Oil Bath Crank Case
- Stainless Valves
- Brass Manifold
- Thermo Pump Protector
- Adjustable Pressure Regulator
- Ball Valve Control

Engines

- 6.5 or 14 HP Kohler Gasoline Engines
- Efficient
- Serviceable

Frame

- Fully Welded Powder Coated Steel
- 16 Inch Wheels
- 100 Gallon Poly Water Tank

Includes

- 36" Gun and Wand Assembly with Quick Coupler System
- In-Line Water Filter
- 0°/15°/25°/40° Nozzles
- 1 Soap Nozzle
- Downstream Chemical Injection System
- 50 Feet of High Pressure Hose
- Hose Reel

Options & Accessories

- Extend-A-Wands
- Drain Cleaning/Jetter Kit
- Rotary Nozzle

Ideal for RV dealerships, car lots, equipment rental shops and RV parks. Designed to be pulled behind ATVs or small tractors allowing you to bring your pressure washer to your lot inventory instead of hauling it to the pressure washer saving both time and resources.



72" Wand In Use



PRVWASH100-6.5

MODEL	GPM	PSI	HP	DRIVE	WATER TANK
PRVWASH100-6.5	3	2700	6.5 HP KOHLER	DIRECT	100 GALLON
PRVWASH100-14	4	4000	14 HP KOHLER	DIRECT	100 GALLON

Pumps (Cat, Pratissoli & General Pumps)

- Industrial Heavy Duty Triplex Plunger Slow Speed Pumps
- Oil Bath Crankcase • Stainless Steel Valves • Manifold Available in Brass, Nickel, Aluminum, Bronze or 316 Stainless Steel • Belt Driven or Optional Gearbox Drive

Electric Motors

- 1750 RPM • TEFC • Full Frame • 1.25 Service Factors
- Thermo Overload Protection • Continuous Duty

Electrical Control Panel

- Nema 4 • Water Tight • Easy Access
- Auto Stop / Start With Time Delay

Frame

- All Welded • All Powder Coated • Super Heavy Duty Pl. Channel Iron Base Frame Assembled

Includes

- Liquid Filled SS Pressure Gauge • Adjustable Pressure Regulator

Options & Accessories

- Multi Pump and Multi Staging of Pumps • High Temp Down • Pulsation Dampener • Pressure Blow Off • Tank
- Steam/Hot Water Sensor Temp Controls • Level Control
- Wash Station Foamers • Wash Station Control System
- Wash Station Valve Assemblies • VFD • PLC Control
- Pressure Transducer

Designed for industrial and food processing plants that require 24 hour on demand cleaning capabilities throughout their operation. All requirements can be met no matter how large or small the need.



MODEL	GPM	PSI	HP	VOLTAGE
PJ1010E-1	10	1000	7.5	208/440/575V 3ph
PJ1510E-1	15	1000	10	208/440/575V 3ph
PJ2110E-1	21	1000	15	208/440/575V 3ph
PJ1022E-1	10	2200	15	208/440/575V 3ph
PJ4210E-2	42	1000	2 x 15	208/440/575V 3ph
PJ3612E-1	36	1200	30	208/440/575V 3ph
PJ4510E-1	45	1000	30	208/440/575V 3ph
PJ7212E-2	72	1200	2 x 30	208/440/575V 3ph
PJ9010E-2	90	1000	2 x 30	208/440/575V 3ph
PJ13510E-3	135	1000	3 x 30	208/440/575V 3ph
PJ18010E-4	180	1000	4 x 30	208/440/575V 3ph
PJ2320E-1	23	2000	30	208/440/575V 3ph
PJ4620E-2	46	2000	2 x 30	208/440/575V 3ph
PJ6012E-1	60	1200	50	208/440/575V 3ph
PJ7010E-1	70	1000	50	208/440/575V 3ph
PJ6010E-1	60	1000	40	208/440/575V 3ph
PJ3025E-1	25	3000	50	208/440/575V 3ph
PJ4020E-1	20	4000	50	208/440/575V 3ph

Electric Motor (2HP)

- 1750 RPM • TEFC • Full Frame • 1.15 Service Factor
- Thermal Overload Protection • Continuous Duty

Pump

- Heavy Duty Triplex Plunger Pump • Oil Bath Crank Case
- Stainless Valves • Brass Manifold • Direct Drive
- Thermo Pump Protector

Control Panel

- Nema 4 • Water Tight • Easy Access
- Heavy Duty On / Off Cam Switch

Coil

- Schedule 80 Pipe • Elliptically Wound & Stretched
- No Seam Welds • Structurally Braced to Reduce Vibration & Pipe Wear • Sealed with Ceramic Blanket
- Stainless Steel Housing

Burner

- Oil Fired • Adjustable Thermostat • On/Off Switch
- North American Made • Dependable • Serviceable

Frame

- All Welded • Powder Coated • 40 Gallon Internal Fuel Tank • Forklift Slots and Lifting Eyes
- Optional Wheel Kit Available

Safety Features

- Electronic Thermostat with Deviation Control
- Safety Valve • Flow Control

Options and Accessories To Consider

- Wheel Kit (Add (-WK) To Model Number)
- Skid Frame Option Complete with Water tank
- Complete Trailer Package

Dry Steam is used for a wide variety of applications.

- **Thawing** culverts, pipelines, drains for processing plants, railways, municipalities and highway departments.
- **Degreasing** - the high temperature raises the effectiveness of chemicals
- **Degassing** petroleum tanks before maintenance or repair
- **Melting** debris such as paraffin, wax and grease from traps in wastewater treatment and refineries.
- **Cleaning and Restoring** - steam is less intrusive than high pressure cleaning for masonry restoration and monument cleaning etc.
- **Removing** gum from sidewalks and other like surfaces
- **Prepping** surfaces for paint
- **Purifying** soil, mulch and compost
- **Weed Control** - kills weeds without the use of chemicals
- **Curing** municipal pipe relining systems



PJO30ST-WK

The rugged frame is designed to protect all components and ensure these units are easy to maintain and service.



MODEL	BHP	PSI	BTU	HP	VOLTAGE
PJO10ST	10	100	450,000	2	110 V - 1PH
PJO20ST	20	100	800,000	2	110 V - 1PH
PJO30ST	30	100	1,200,000	2	110 V - 1PH
PJO40ST	40	100	1,500,000	2	110 V - 1PH
PJO50ST	50	100	2,000,000	2	110 V - 1PH

Water Tanks

225, 550 and 630 gallon poly water tanks. The 225 and 550 gallon tanks are secured to the trailer floor with heavy duty ratchet straps. The 630 gallon tank is enclosed in a steel pipe frame and bolted to the floor of the trailer as seen to the right.

Dump Valve

Equipped with a 2" dump valve that empties the water tank through the floor.

Reel Rack

Capacity For 2 - 300 Foot Hose Reels. A wide variety of reel options are available.

Winterization System

35 Gallon Poly Antifreeze Tank

Chemical Tank

10 Gallon Poly Chemical Tank Mounted on Top of the Water Tank For High Pressure Soap Injection.

Exhaust Vent

These enclosed trailers are equipped with steel roof vents with special safety switches that will not allow the burner to operate without opening the vent

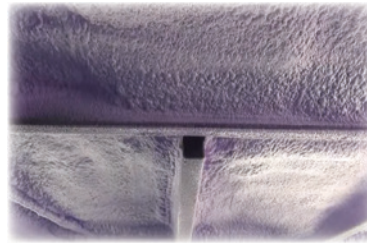
120 Volt Heater

1500 Watt Heater

Complete insulated enclosed trailer packages. Everything has been thought of to ensure your success. 4 to 10 GPM at 3000 to 8000 PSI Gasoline or Diesel Driven - Oil Fired. (See Pages 15 and 16)

16' Trailer Specifications

- Extra Heavy Duty Structure
- 2 - 7000 Lb Axles
- 18" 10 Ply Tires
- Fully Insulated Walls and Ceiling
- Spray Foamed Floor
- Fully Metal Lined
- Doubled Up Floor Beams



< Spray Foamed Floors

630 Gallon Water Tank >



Coin Operated Car Wash

Electric Motor (5HP)

- 1750 RPM • TEFC • Full Frame • 1.15 Service Factor
- Thermal Overload Protection • Continuous Duty
- 220 Volt - 1Phase or 230/440/575 Volt - 3 Phase

Pump

- Heavy Duty Triplex Plunger Pump • Oil Bath Crank Case
- Stainless Valves • Brass Manifold • Direct Drive • Thermo Pump Protector • Belt or Flange & Coupling Drive

Control Panel

- Nema 4 • Water Tight • Easy Access • Mounted to Pump Base • Prewired, Just Requires a Power Source

Soap Controls

- Standard Soap and Wax Injection Valves with Fine Point Metering • Complete with Hot Water Solenoid to Control Hot Soap and Wax • Cold Water Rinse Solenoid to Save Money Heating Water • Pump Suction is Controlled with 10 Gallon Poly Float Tank

Options

- Foaming Brush System • Motor and Tire Cleaner • Floor Mat Clamps • Coin Operated Vacuums • Vending Machines
- Stainless Bill Changer

Other

- Adjustable Pressure Regulator • Liquid Filled Pressure Gauge • Heavy Duty Fittings

Bay Equipment

- Stainless Steel Heavy Duty Coin Box with 8 Position Switch for Optional Selections, Internal Heater and Extreme Duty Lock Box • Multi Coin Acceptor with State Timer, Coin Acceptor (Quarters, Loonies and Toonies USA and Canadian or Tokens) LED, Beeper (Specify Front or Rear Loading)
- Center Mounted Spring Loaded 360 degree Boom • Flexible Wands • High Pressure Swivels • 4000 PSI Rated Weep Trigger Gun • Stainless Steel Nozzle • Bay Lines are Steel Braided and Non-Marking • Stow-Away Wall Brackets
- Complete Instruction Signs are Included

Frame

- All Welded • Powder Coated • Bench Style • Optional Stackable Pump System Frames Available

Van or Truck Mount Jetters

Engine

- 27 HP Kohler Gasoline Engine With Accessible Breather

Pump

- Udon Run Dry Pump (Gearbox Driven)
- 12 GPM @ 3000 PSI

Included

- 12 Volt Hose Reel Complete With Hose Guides, Super Swivel and Foot Pedal Control
- 300 Feet of 3/8" Jetter Hose
- Emergency Shut Off Valve and Hour Meter

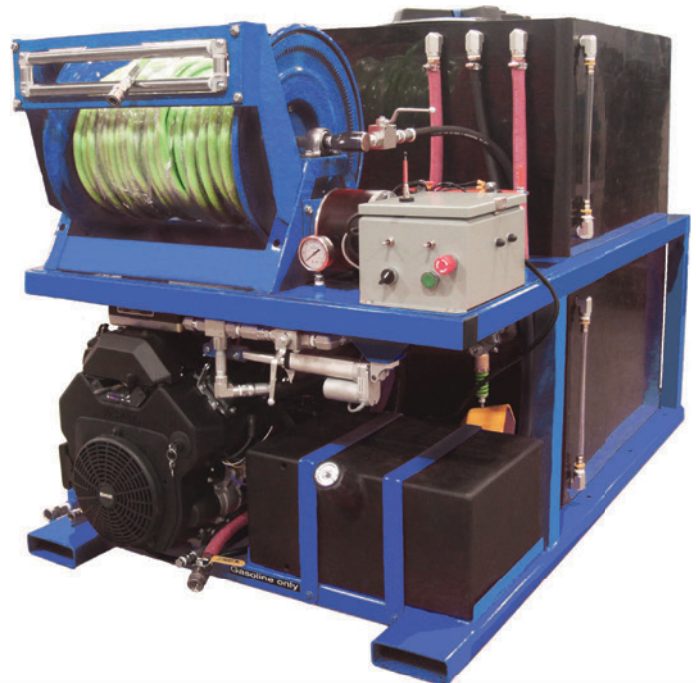
Frame

- 2" Square Tubing • Fully Welded • Powder Coated
- Drilled and Tapped • Forklift Slots
- 10 Gallon Poly Fuel Tank
- 200 Gallon 1/2" Poly Water Tank with Level Sights and 16" Cover

Optional Remote Control For:

- Hose Reel In
- Motor OFF and Speed Control
- Pressure ON/OFF

Designed to be transported in a pickup truck or the side or rear door of a van.



MODEL	GPM	PSI	HP	DRIVE	WATER TANK	FUEL TANK	HOSE REEL
PJJ1030G	12	3000	27 HP KOHLER	DIRECT	200 GALLON	10 GALLON	12 VOLT - 300 FT

All In One Skid & Tank Units

Customize a totally self contained cleaning system to meet your needs. Choose a machine from the industrial hot water gas or diesel driven series, a water tank (225, 550 and 630 gallon) and your hose reel(s). Winterization and chemical tanks are also available with these packages. The skid frame is constructed from fully welded steel tubing (sizing depends on the size of the unit) that is fully powder coated for a lasting finish. It is equipped with both lifting eyes and forklift slots for loading and unloading your unit. These units allow you to have a fully portable self contained cleaning system that can be transported to job sites with ease. Being able to load and unload your unit also gives you the option of using your truck or trailer for alternate uses as well.



Hydrostatic Testers

Pump

- Hydro Diaphragm Pump
- 550 RPM
- Gearbox Drive
- 10 GPM @ 600 PSI

Ideal for contractors and rental shops for test pumps due to its rugged and dependable design.

Engine

- 6.5 HP Kohler or Honda Gasoline Engine
- Low Oil Alert System
- Recoil Start

Frame

- All Welded
- All Powder Coated
- Roll Cage Cart
- 13" Foam Filled Tires

Includes

- Adjustable Heavy Duty Aluminum Pressure Regulator with Water Dump Feature
- Liquid Filled Pressure Gauge
- 10 Feet of Suction/Bypass & Discharge Hose



MODEL	GPM	PSI	HP	DRIVE
PJHT-6.5-K	10	600	6.5 HP KOHLER	DIRECT
PJHT-6.5-H	10	600	6.5 HP HONDA	DIRECT

Popular Options & Accessories



We offer a complete line of accessories and options to improve your cleaning efficiency.

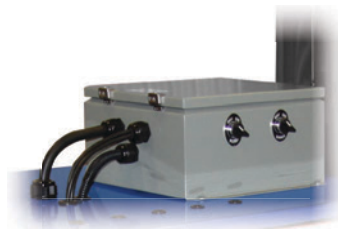
Steam Kits

All of our industrial hot water units are available with wet steam capabilities, some are available with dry steam as well. (Must Be Purchased with Unit)



Auto Stop/Start

This option gives you the ability to start and stop your unit by squeezing and releasing the trigger gun. This prevents the machine from sitting in bypass mode which will extend the life of your unit over time. It will also save you money because your resources are not being used when the machine is not in use. (Available for Electric Units Only - Must Be Purchased with Unit)



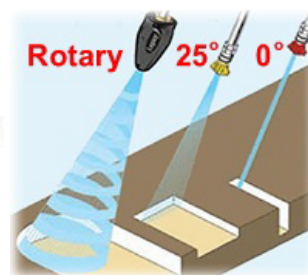
Hose Reel

A hose reel will extend the life of your high pressure cleaning hose considerably by providing safe tangle and kink free storage. It will also save you time when using and storing your high pressure cleaning equipment. **Every machine should have one!**



Rotary Nozzle

Rotating nozzles increase force in which you clean and can easily cut through cleaning jobs in the half the time.



Drain Cleaning/Jetter Kit

Used for cleaning drains and downspouts and thawing and unclogging pipes.



Surface Cleaner

Used for removing dirt and grime from brick, concrete, sidewalks, driveways, shop floors in a contained fashion.



Wet Sandblast Kit

Peels paint and rust from metal effortlessly with no dust. Leaves surface ready to paint.



Undercarriage Wand

Used for cleaning under cars, trucks and equipment. Ideal for detailing, rust check, and vehicle repair centers.



Water Broom

Perfect for cleaning floors, decks, driveways and fire-hose. Various sizes available



PowerJet

PRESSURE CLEANING SYSTEMS

2016 Equipment Catalog

1-877-765-9211

sales@powerjetpressure.com

www.powerjetpressure.com

The *POWER* you need to get the job done!