



Spraying Nozzles

- 5000 PSI operating pressure
- Through hardened stainless steel orifices offer superior wear resistance
- Stainless steel hosing resists cracking and wear
- Resistant to most chemicals
- Large color coded on QC nozzles permits rapid identification of spray angle

1/8" MPT Nozzles

	0°	15°	25°	40°
2.0	5300	5304	2450	1708
2.5	5301	5305	5186	1710
3.0	5302	5306	2370	5556
3.5	5303	5307		



1/4" MPT Nozzles

	0°	15°	25°	40°
2.0	1827	5267	5268	5269
2.5	1953	1954	1955	2314
3.0	1828	2308	2311	2315
3.5	1829	2309	2312	2316
4.0	1830	1835	1844	1853
4.5	1831	1836	1845	3236
5.0	1832	1837	1846	1855
5.5	1833	1838	1847	1856
6.0	1834	1839	1848	1857
6.5	2303	1840	1849	1858
7.0	2304	1841	1850	1859
7.5	2305	1842	1851	1860
8.0	2306	1843	1852	1861
9.0	5467	5461	5465	6819
10.0	2307	2310	2313	2317



Color Coded Quick Connect

1/4" QC

	0° Red	15° Yellow	25° Green	40° White
3.0	5297	5288	5291	5294
3.25	6643	6668	6669	6733
3.5	5263	5264	5265	5266
4.0	1807	1812	1817	1822
4.5	1808	1813	1818	1823
5.0	1809	1814	1819	1824
5.5	1810	1815	1820	1825
6.0	1811	1816	1821	1826
6.5	5298	5289	5292	5295
7.0	5299	5290	5293	5296
7.5	4384	3300	1913	1909
8.0	2149	5011	1888	4157
9.0		5940	2371	5557
10.0	2151	3619	1906	4259



Quick Connect Nozzle Packs

4 Packs

0°, 15°, 25°, 40° QC nozzle

Part	Size	Part	Size
4378	3.5	3437	5.0
3561	4.0	3438	5.5
3436	4.5	3439	6.0



Soap Nozzles

1/4" MPT Brass

Part	Nozzle
4958	6540 1/8"
4617	6540 1/4"



5 Packs

0°, 15°, 25°, 40°, & 65° soap nozzle

PART	Size	Part	Size
5623	3.0	5724	5.0
5721	3.5	5725	5.5
5722	4.0	5726	6.0
5723	4.5	5727	6.5



Quick Change

	25°	65°
40.0	5422	5287



Spray Nozzle Selection Chart

		PSI		PSI		PSI		PSI		PSI		PSI	
		500	1000	1500	2000	2500	3000	3500	4000	4500	5000	6000	
GPM	2.0	5.5	4.0	3.5	3.0	2.5	2.5	2.0	2.0	2.0	2.0	1.5	
	2.5	7.0	5.0	4.0	3.5	3.0	3.0	2.5	2.5	2.5	2.0	2.0	
	3.0	8.5	6.0	5.0	4.0	4.0	3.5	3.0	3.0	3.0	2.5	2.5	
	3.5	10.0	7.0	5.5	5.0	4.5	4.0	3.5	3.5	3.5	3.0	3.0	
	4.0	12.0	8.0	6.5	5.5	5.0	4.5	4.5	4.0	4.0	3.5	3.5	
	4.5	13.0	9.0	7.5	6.5	5.5	5.0	5.0	4.5	4.0	4.0	3.5	
	5.0	15.0	10.0	8.0	7.0	6.5	6.0	5.5	5.0	4.5	4.5	4.0	
	5.5	20.0	11.0	9.0	8.0	7.0	6.5	6.0	5.5	5.0	5.0	4.5	
	6.0	20.0	12.0	10.0	8.5	7.5	7.0	6.5	6.0	5.5	5.5	5.0	
	6.5	20.0	13.0	11.0	9.0	8.0	7.5	7.0	6.5	6.0	6.0	5.5	
GPM	7.0	20.0	15.0	12.0	10.0	9.0	8.0	7.5	7.0	6.5	6.5	5.5	
	7.5	30.0	15.0	12.0	11.0	10.0	8.5	8.0	7.5	7.0	6.5	6.0	
	8.0	30.0	20.0	13.0	12.0	10.0	9.0	8.5	8.0	7.5	7.0	6.5	
	8.5	10.0	20.0	15.0	12.0	11.0	10.0	9.0	8.5	8.0	7.5	7.0	
	9.0	30.0	20.0	15.0	13.0	12.0	11.0	10.0	9.0	8.5	8.0	7.5	
	10	30.0	20.0	20.0	15.0	13.0	12.0	11.0	10.0	10.0	9.0	8.0	

Hydrojet Spraying Nozzles

- All nozzles tested for flow accuracy and spray patterns at time of manufacturing.
- Color tabs feature easy to use spray angle orientation
- Improved cap design for easy grip
- Super hard body reduces plug wear
- Special QC body for smooth insertion & ejection

1/4" Quick Change



5 Packs

Includes 0°, 15°, 25°, 40° & 65° soap nozzles



Part	Size
6805	3.0
6806	3.5
6807	4.0
6808	4.5
6810	5.0

1/4" Stainless Steel



	0°	15°	25°	40°
3.0	4625	4697	4719	4779
3.5	4634	4699	4721	4783
4.0	4638	4707	4724	4786
4.5	4639	4708	4728	4787
5.0	4657	4709	4731	4788
5.5	4685	4710	4736	4789
6.0	4686	4713	4745	4794
6.5	4692	4717	4754	4797
7.0	3643	3659	3684	3713
7.5	3649	3662	3685	3714
8.0	3653	3670	3686	3716
9.0	3654	3678	3704	3718
10.0	3656	3679	3711	3721

	0°	15°	25°	40°
2.0	3137	3167	3197	3286
2.5	3161	3168	3261	3321
3.0	4835	4856	4885	4919
3.5	4836	4857	4894	4920
4.0	4837	4865	4895	4926
4.5	4838	4870	4896	4929
5.0	4839	4873	4897	4941
5.5	4841	4874	4898	4950
6.0	4848	4875	4911	4953
6.5	4851	4882	4914	4983
7.0	3322	3426	3518	3607
7.5	3324	3475	3520	3612
8.0	3338	3482	3555	3618
9.0	3412	3515	3572	3625
10.0	3416	3483	3581	3629



Spraying Nozzles

- High pressure, high impact solid stream (0°) for flat fan spray pattern
- Operating pressure from 300 to 4000 PSI
- Longer wear life and flow control accuracy with specially hardened stainless steel construction



1/8 Meg Stainless Steel Nozzles

	2.0	3.0	3.5	4.0	4.5	5.0	5.5	6.0	6.5	7.0	7.5	8.0	8.5	9.0	10.0
0°	2020	1455		2019	2240	2241	2242	2243	2244	2245	2246	2247	2248	3254	3258
15°	2021	1796	1045	1044	1762	1763	1764	1862	2055	2056	2057	2058	2059	3255	3259
25°	2022	1863	1043	1765	1766	1123	1767	1864	2060	2061	2062	2063	2064	3256	3238
40°	2249	2250		2252	2253	1190	3263	3264	1723	3240	3241	3242	3243	3257	3239

1/4 Meg Stainless Steel Nozzles

	2.0	2.5	3.0	3.5	4.0	4.5	5.0	5.5	6.0	6.5	7.0	7.5	8.0	8.5
0°	1170		1167	1165	1163	1162	1161	1160	1159	1158	1156	1700	1154	2065
5°					4112		4290	3755	3756	4280				
15°	1151	1687	1150	1148	1146	1145	1143	1142	1141	1140	1139	1701	1138	2066
25°	1768	2812	1769	1125	1124	1122	1121	1119	1118	1117	1115	1702	1114	3237
40°	3235		1770	1771	1104	1103	1102	1100	1099	1098	1096	1703	1095	2067
65°			4026		3788	3789	3790	3791	3792	3793	3794		3795	



	9.0	10.0	11.0	12.0	13.0	15.0	20.0	30.0	40.0	50.0	60.0	70.0
0°	1153	1152				6015	2227	3521	3626	3780	4257	4720
15°	1137	1136	1135	1132	1131	1129	1128	3232	3233	6111	6119	
25°	1112	1111	1109	1108	3244	1107	1106	3245	3246	2364	2735	
40°	1093	1092	1090	1089	1088	1087	1086	1724	2040	6074	6053	
65°		4027										

EG Flat Nozzles

1/4 Meg Brass Soap Nozzles



	15°	25°	40°	65°
10.0		1890	1897	3260
15.0		1891	1898	2147
20.0		1892	1197	1014
30.0	3478	1893	1149	1127
40.0		1894	1168	1275
50.0		1895	1899	1901
60.0		1896	1900	1902

Use with Karcher and Karcher style nozzle holders



	0°	15°	25°	40°
4.0	4160	4165	4170	4175
4.5	4161	4166	4171	4176
5.0	4162	4167	4172	4177
5.5	4163	4168	4173	4178
6.0	4164	4169	4174	4179
6.5		4233	4232	



Quick Connect Nozzles

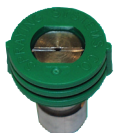
- High impact flat fan spray pattern with uniform distribution
- One piece body design of hardened stainless steel
- Incorporates convenience of quick connect design
- Protective nozzle guards are color coded for easy identification of spray angles

1/4 QCMEG



	0° Red	15° Yellow	25° Green	40° White
3.0	6188	1756	1758	1760
3.5	1461	1757	1759	1761
4.0	1085	1076	1060	1584
4.5	1084	1074	1058	1563
5.0	1082	1072	1057	1589
5.5	1081	1071	1055	1585
6.0	1080	1065	1054	1590
6.5	1079	1063	1053	1110
7.0	1078	1062	1049	1591
7.5	1704	1705	1706	1707
8.0	1077	1061	1048	1592
9.0	NA	2620	3910	3911
10.0	2205	2206	2207	2208
12.0	2359	2621	5055	

IMEG Nozzles



Offer 25% to 100% more impact than standard QCMEG nozzles

	15° Yellow	25° Green	40° White
4.0	4966	4971	4976
4.5	4967	4972	4977
5.0	4968	4973	4978
5.5	4969	4974	4979
6.0	4970	4975	4980

Quick Change Soap Nozzles



	25°	65°
40.0	1776	1720



Quick Change Soap Nozzles



	65°
40.0	6641

Roto-Jet Rotating Nozzles

3700 PSI 212°F maximum



Nozzles

Part	Size
5190	3.0
4811	3.5
4800	4.0
4801	4.5
4802	5.0
4803	5.5
4804	6.0

Repair Kits

Part	Size
5189	3.0
4805	3.5
4806	4.0
4807	4.5
4808	5.0
4809	5.5
4810	6.0

4500 PSI 212°F maximum



Nozzles

Part	Size
6012	3.5
6013	4.0
6014	4.5
6020	5.0
6021	5.5
6096	6.0
6117	7.0

Repair Kits

Part	Size
5934	3.5
5939	4.0
5942	4.5
5945	5.0
5946	5.5
5949	6.0
5983	7.0

5800 PSI 200°F maximum



Nozzles

Part	Size
4812	4.0
4813	4.5
4814	5.0
4815	5.5
4816	6.0
4817	7.0
4818	8.0
4819	12.0
4844	15.0

Repair Kits

Part	Size
4820	4.0
4821	4.5
4822	5.0
4823	5.5
4824	6.0
4825	7.0
4826	8.0
4827	12.0
4849	15.0

Designed to clean with the impact of a Zero degree flat spray nozzle with the pattern of a 25 degree nozzle. Rotating nozzles will cut your cleaning time in half. With a rotating nozzle, you can perform the following quickly; rust removal, tank cleaning, paint and graffiti removal, brick cleaning, concrete, gum from sidewalks, boat cleaning and barnacle removal, asbestos abatement, cleaning crab and lobster pots, fish nets, and removing mud and clay from highways.

NOTE: Rotating nozzles should be started with the nozzle pointing to the ground. This prevents damage to the ceramic orifice. It is highly recommended a high pressure filter be used with each nozzle. Not using a filter could void any warranty. Eye protection must be worn while using a rotating nozzle. Do not point directly at any person, or animals.

Rotating Nozzles



- 1/4" FPT Inlet
- 190°F maximum

3650 PSI

Part	Size
6167	3.0
6724	3.5
6725	4.0
6722	4.5
6709	5.0

Part	Size
6723	5.5
6112	6.0
6225	7.0
6230	8.0



5100 PSI

Part	Size
5669	3.0
5670	3.5
5671	4.0
5672	4.5
5673	5.0

Part	Size
5674	5.5
5675	6.0
5676	7.0
5677	8.0



Repair Kits

Note: Replacement kits will fit both the 3650 & 5100 nozzles. Save money on stock.

Part	Size
6166	3.0
6726	3.5
6727	4.0
6728	4.5
6575	5.0

Part	Size
6729	5.5
6581	6.0
6720	7.0
6721	8.0



SUTTNER Turbo Nozzles

Last 3 times longer than competitors!
200% cleaning efficiency increase over 25° flat fan nozzle.

ST-357 3600 PSI

- 1/4" FPT Inlet
- 190°F maximum

Nozzles

Part	Size
4584	3.0
4109	3.5
4303	4.0
4304	4.5
4305	5.0
4306	5.5
4307	6.0

Kits

Part	Size
5357	3.0
4385	3.5
4386	4.0
4387	4.5
4388	5.0
4389	5.5
4390	6.0



ST-456

5000 PSI

Part	Size
6454	3.0
6455	3.5
6456	4.0
6457	4.5
6466	5.0
6467	5.5
6468	6.0

Part	Size
6471	3.0
6472	3.5
6486	4.0
6490	4.5
6491	5.0
6492	5.5
6498	6.0

NEW



ST-457 6000 PSI

- 1/4" FPT Inlet
- 212°F maximum

Nozzles

Part	Size
5253	3.0
5254	3.5
4555	4.0
4556	4.5
4567	5.0
4557	5.5
4558	6.0
4560	7.0
4641	8.0
4645	10.0

Kits

Part	Size
5255	3.0
5014	3.5
4568	4.0
4561	4.5
4562	5.0
4563	5.5
4564	6.0
4566	7.0
4647	8.0
4651	10.0

